

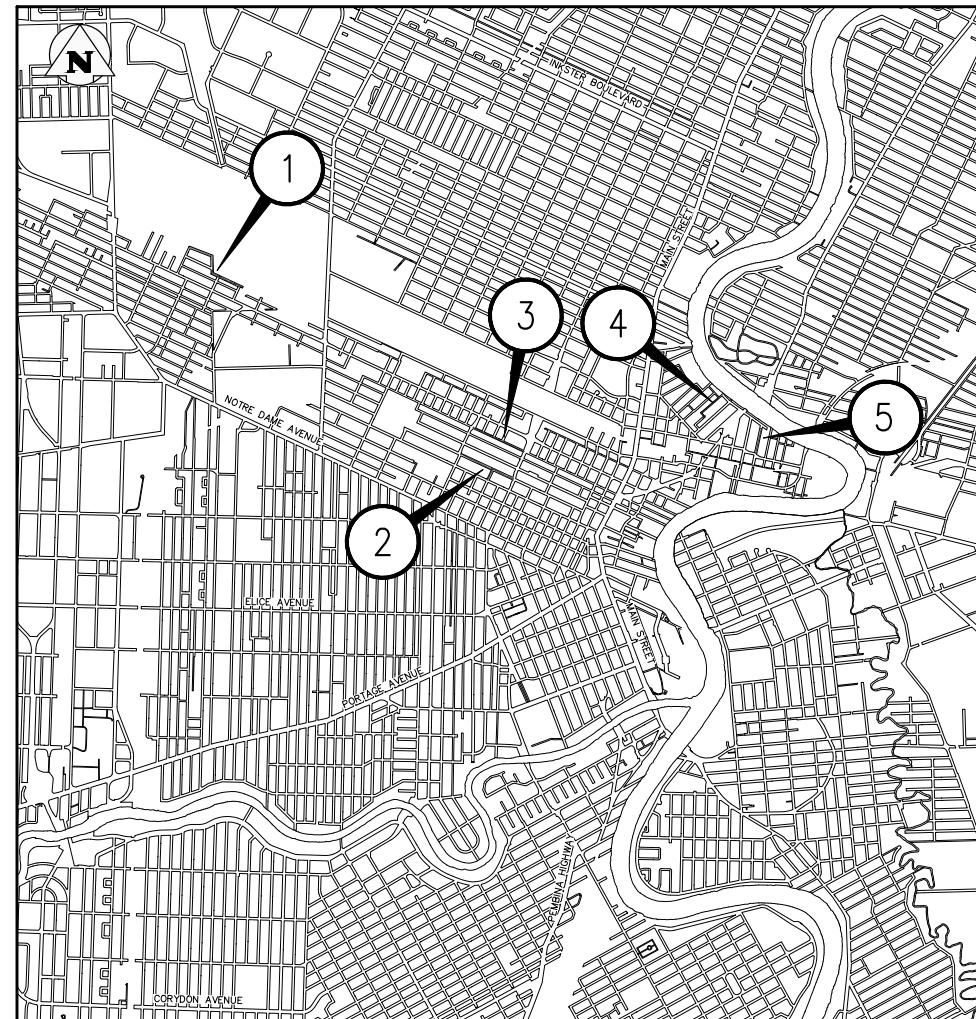
APPENDIX B

TEMPORARY TRAFFIC CONTROL DRAWINGS



TENDER NO. 309-2025

2025 LOCAL STREET RENEWAL PROGRAM: ELGIN AVENUE AND VARIOUS OTHER LOCATIONS PHASING & SIGNAGE PLAN



PHASING & SIGNAGE PLAN INDEX			
<u>CONSULTANT</u> <u>DRAWING #</u>	<u>SHEET #</u>	<u>SITE #</u>	<u>TITLE</u>
F-0000	1		MAP & LEGEND
F-0100	2		IRYSH AVE: MINOR REHABILITATION
F-0101	3	1	BURY ST: THIN BITUMINOUS OVERLAY
F-0102	4		WHYTE AVE: CONCRETE RECONSTRUCTION
F-0200	5		ELGIN AVE & KATE ST: ASPHALT RECONSTRUCTION
F-0201	6	2	ELGIN AVE & KATE ST: ASPHALT RECONSTRUCTION
C-0300	7		ALEXANDER AVE: MINOR REHABILITATION PHASE
C-0301	8	3	ALEXANDER AVE: MINOR REHABILITATION PHASE
C-0400	9	4	PRINCE EDWARD ST: ASPHALT RECONSTRUCTION PHASE
C-0500	10	5	MCFARLANE ST NORTH: ASPHALT RECONSTRUCTION

1. ALL TEMPORARY TRAFFIC CONTROL TO BE IN ACCORDANCE WITH THE LATEST MANUAL OF TEMPORARY TRAFFIC CONTROL ON CITY STREETS (MTTC) AT TENDER.
2. PERFORM WORK IN PHASES & STAGES TO MINIMIZE IMPACT TO TRAFFIC FLOW AND ACCESS TO RESIDENCES.
3. NOT ALL REQUIRED SIGNAGE IS SHOWN FOR EACH PHASE & SUB-PHASE. ADDITIONAL SIGNAGE TO PROVIDED IN ACCORDANCE WITH THE MTTC.
4. THE PERMANENT POSTED SPEED LIMIT OF 50 KM/HR SHALL BE USED FOR ALL TAPER LENGTHS AND OTHER CRITERIA IN THE MTTC.
5. CONTRACTOR SHALL SUBMIT THE PEDESTRIAN ACCESSIBILITY PLAN FOR REVIEW & ACCEPTANCE BY THE CONTRACT ADMINISTRATOR.
6. CONTRACTOR SHALL BE RESPONSIBLE FOR ALL PERMITS, THE SUPPLY, PLACEMENT & MAINTENANCE OF ALL TEMPORARY TRAFFIC CONTROL SIGNAGE IN ACCORDANCE WITH THE TENDER.
7. ALL LANE CLOSURE REQUESTS MUST BE SUBMITTED THROUGH THE CONTRACT ADMINISTRATOR & ARE SUBJECT TO THE APPROVAL OF THE TRAFFIC MANAGEMENT BRANCH.
8. CONTRACTOR TO PROVIDE FLAGPERSONS IN ACCORDANCE WITH THE MTTC WHEN MOVING MATERIALS OR EQUIPMENT INTO OR OUT OF TRAFFIC.
9. CONTRACTOR SHALL PROVIDE FLAGPERSONS DURING ALL ASPHALT PLACEMENT AT THE PROJECT LIMITS TO MINIMIZE IMPACT TO TRAFFIC.
10. WHEN FLAGPERSONS ARE PRESENT, FLAGPERSON SIGNAGE MUST BE PLACED IN ACCORDANCE WITH THE MTTC.

11. WHEN FLAGPERSONS ARE NOT PRESENT, THE FLAGPERSON SIGNAGE MUST BE REMOVED OR HIDDEN.
12. PROVIDE TEMPORARY RAMPS & CROSSING WHERE DIRECTED BY CONTRACT ADMINISTRATOR & IN ACCORDANCE WITH THE ACCESSIBILITY PLAN FOR PEDESTRIAN CROSSINGS WHILE PERFORMING WORK IN THE INTERSECTIONS AND APPROACHES.
13. INSTALL WARNING FLAGS IN ACCORDANCE WITH MTC 3.07.04 ON THE FIRST WARNING SIGN IN EACH LANE DROP TAPER.
14. WHERE A LANE IS REQUIRED TO BE CLOSED ON MAJOR INTERSECTING STREETS PERFORM THE WORK ON THE TIE-IN DURING OFF PEAK-HOURS.
15. TEMPORARY TRANSIT LANDINGS WILL BE REQUIRED FOR ANY TEMPORARY TRANSIT STOP RELOCATIONS IN ACCORDANCE WITH THE MTC.
16. CONTRACTOR TO MONITOR & MAINTAIN THE TEMPORARY SIGNAGE FOR THE DURATION OF THE PROJECT & MODIFY AS NEEDED FOR EACH STAGE OF THE WORKS.
17. CONTRACTOR TO REMEDY ANY SIGNAGE DEEMED INSUFFICIENT OR INCORRECT AS DIRECTED BY THE CONTRACT ADMINISTRATOR OR TRAFFIC MANAGEMENT.
18. STAGE SIDEWALK WORK SUCH THAT PEDESTRIAN ACCESS IS MAINTAINED ALONG ONE SIDE OF EACH ROADWAY AT ALL TIMES.
19. PROVIDE ADVANCED CONSTRUCTION & SIDEWALK CLOSED/DETOUR SIGNAGE IN ACCORDANCE WITH THE MTC. PROVIDE SMALL CONES IN CENTRE WHERE BARRICADES. GUIDE PEDESTRIANS THROUGH THE CONSTRUCTION ZONE.

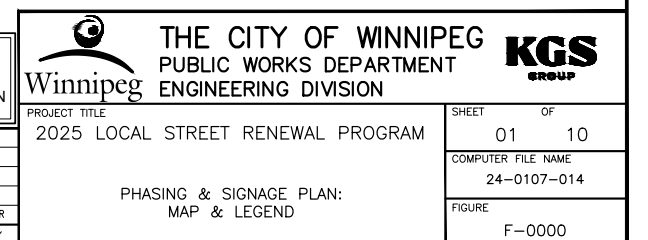
PEDESTRIAN ACCOMMODATION:
WHERE PEDESTRIANS CROSS THE WORK SITE A
LOW BARRIER SHALL BE USED IN ACCORDANCE
WITH THE MTT. AN ACCEPTABLE SOLUTION IS TO USE PYLONS
IN CONJUNCTION WITH BARRIERS



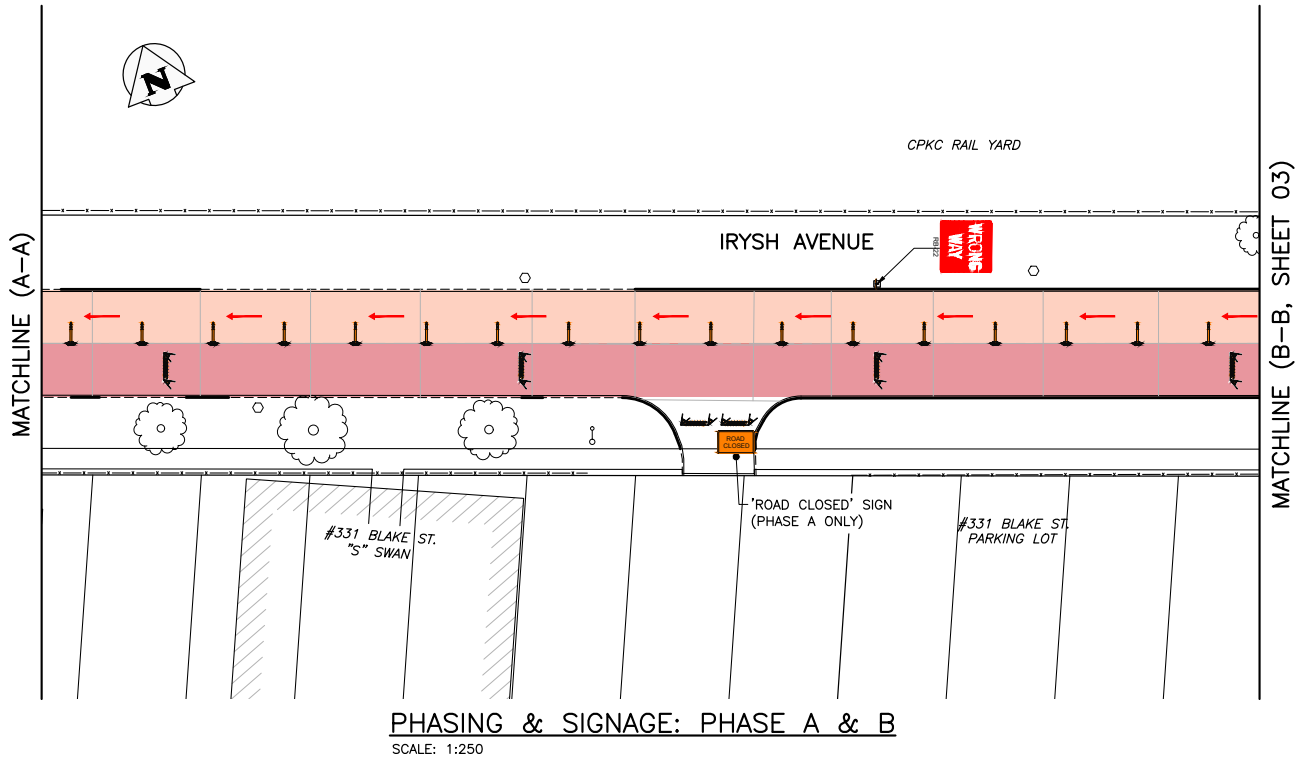
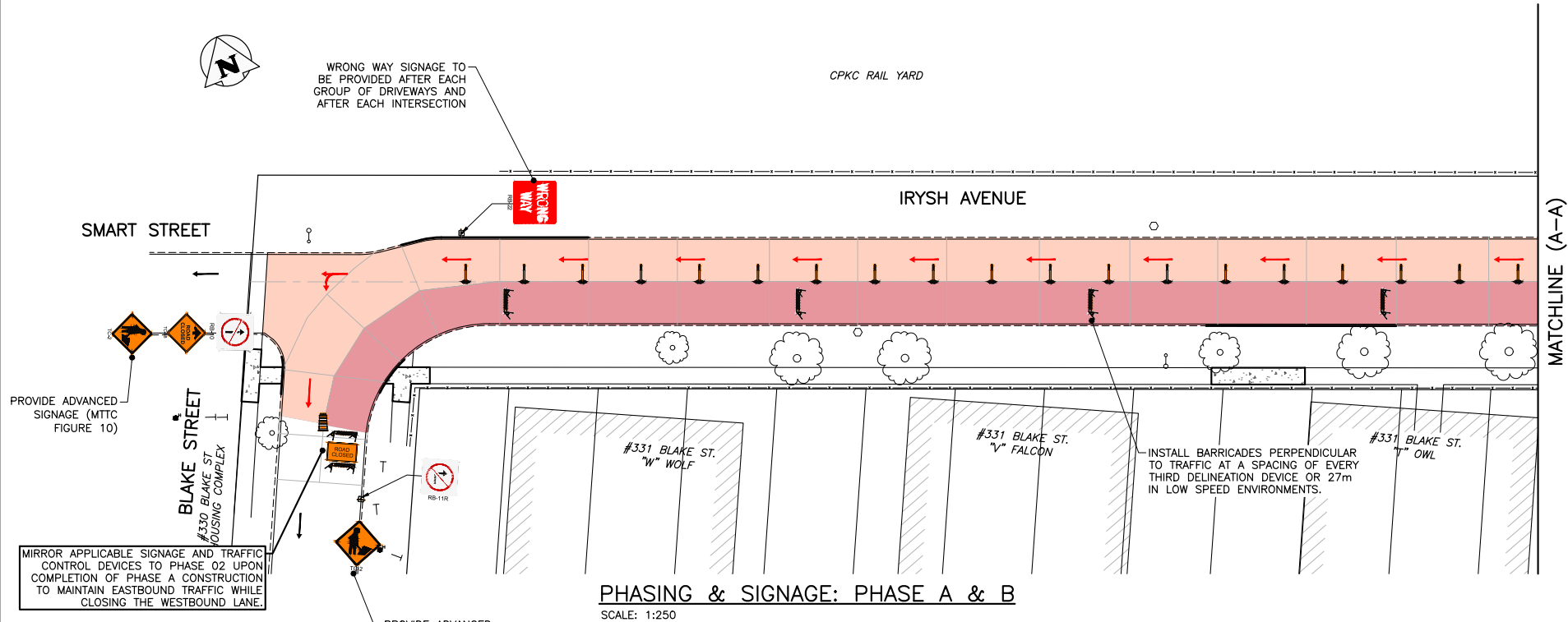
TENDER NO. 309-2025



A	ISSUED FOR REVIEW	2025/04/08	CL
NO.	REVISIONS	DATE	BY



Files\\projects\\2024\\24-0107-014\\Dwg\\Trans\\24-0107-014_309-2025_F-ALL Signage and Phasing Plans - Tab F-0100 Plotted By: TTron 25/04/09 [Wed 10:29am]



GENERAL NOTES:

- ALL TEMPORARY TRAFFIC CONTROL TO BE IN ACCORDANCE WITH THE LATEST MANUAL OF TEMPORARY TRAFFIC CONTROL ON CITY STREETS (MTTC) AT TENDER.
- PERFORM WORK IN PHASES & STAGES TO MINIMIZE IMPACT TO TRAFFIC FLOW AND ACCESS TO RESIDENCES.
- NOT ALL REQUIRED SIGNAGE IS SHOWN FOR EACH PHASE & SUB-PHASE. ADDITIONAL SIGNAGE TO PROVIDED IN ACCORDANCE WITH THE MTTC.
- THE PERMANENT POSTED SPEED LIMIT OF 50 KM/HR SHALL BE USED FOR ALL TAPER LENGTHS AND OTHER CRITERIA IN THE MTTC.
- CONTRACTOR SHALL SUBMIT THE PEDESTRIAN ACCESSIBILITY PLAN FOR REVIEW & ACCEPTANCE BY THE CONTRACT ADMINISTRATOR.
- CONTRACTOR SHALL BE RESPONSIBLE FOR ALL PERMITS, THE SUPPLY, PLACEMENT & MAINTENANCE OF ALL TEMPORARY TRAFFIC CONTROL SIGNAGE IN ACCORDANCE WITH THE TENDER.
- ALL LANE CLOSURE REQUESTS MUST BE SUBMITTED THROUGH THE CONTRACT ADMINISTRATOR & ARE SUBJECT TO THE APPROVAL OF THE TRAFFIC MANAGEMENT BRANCH.
- CONTRACTOR TO PROVIDE FLAGPERSONS IN ACCORDANCE WITH THE MTTC WHEN MOVING MATERIALS OR EQUIPMENT INTO OR OUT OF TRAFFIC.
- CONTRACTOR SHALL PROVIDE FLAGPERSONS DURING ALL ASPHALT PLACEMENT AT THE PROJECT LIMITS TO MINIMIZE IMPACT TO TRAFFIC.
- WHEN FLAGPERSONS ARE PRESENT, FLAGPERSON SIGNAGE MUST BE PLACED IN ACCORDANCE WITH THE MTTC.

- WHEN FLAGPERSONS ARE NOT PRESENT, THE FLAGPERSON SIGNAGE MUST BE REMOVED OR HIDDEN.
- PROVIDE TEMPORARY RAMPS & CROSSING WHERE DIRECTED BY CONTRACT ADMINISTRATOR & IN ACCORDANCE WITH THE ACCESSIBILITY PLAN FOR PEDESTRIAN CROSSINGS WHILE PERFORMING WORK IN THE INTERSECTIONS AND APPROACHES.
- INSTALL WARNING FLAGS IN ACCORDANCE WITH MTTC 3.07.04 ON THE FIRST WARNING SIGN IN EACH LANE DROP TAPER.
- WHERE A LANE IS REQUIRED TO BE CLOSED ON MAJOR INTERSECTING STREETS PERFORM THE WORK ON THE TIE-IN DURING OFF PEAK-HOURS.
- TEMPORARY TRANSIT LANDINGS WILL BE REQUIRED FOR ANY TEMPORARY TRANSIT STOP RELOCATIONS IN ACCORDANCE WITH THE MTTC.
- CONTRACTOR TO MONITOR & MAINTAIN THE TEMPORARY SIGNAGE FOR THE DURATION OF THE PROJECT & MODIFY AS NEEDED FOR EACH STAGE OF THE WORKS.
- CONTRACTOR TO REMEDY ANY SIGNAGE DEEMED INSUFFICIENT OR INCORRECT AS DIRECTED BY THE CONTRACT ADMINISTRATOR OR TRAFFIC MANAGEMENT.
- STAGE SIDEWALK WORK SUCH THAT PEDESTRIAN ACCESS IS MAINTAINED ALONG ONE SIDE OF EACH ROADWAY AT ALL TIMES.
- PROVIDE ADVANCED CONSTRUCTION & SIDEWALK CLOSED/DETOUR SIGNAGE IN ACCORDANCE WITH THE MTTC. PROVIDE SMALL CONES IN CENTRE WHERE BARRICADES. GUIDE PEDESTRIANS THROUGH THE CONSTRUCTION ZONE.

PROPERTY LIMITS DELINEATION

DELINEATION OF PROPERTY LIMITS AS SHOWN ON THIS DWG DOES NOT REPRESENT A "LEGAL SURVEY". KGS GROUP MAKES NO REPRESENTATION OR WARRANTY AS TO THE ACCURACY OF PROPERTY LIMITS DELINEATED ON THIS DWG, NOR ON THE DIMENSIONAL ACCURACY OF DWG FEATURES RELATIVE TO THOSE PROPERTY LIMITS.

METRIC

WHOLE NUMBERS INDICATE MILLIMETRES
DECIMALIZED NUMBERS INDICATE METRES

TRAFFIC MANAGEMENT: IRYSH AVENUE MINOR REHABILITATION

- PERFORM WORK IN TWO PHASES, LANE-AT-A-TIME.
- PHASE A AND B COMMENCES FOLLOWING COMPLETION OF WHYTE AVENUE PHASE 02 (SEE SHEET 04).

- PHASE A LANE CLOSURE
- PHASE B LANE CLOSURE
- PEDESTRIANS
- TEMPORARY TRAFFIC FLOW

TENDER NO. 309-2025

PRELIMINARY
NOT TO BE USED FOR CONSTRUCTION

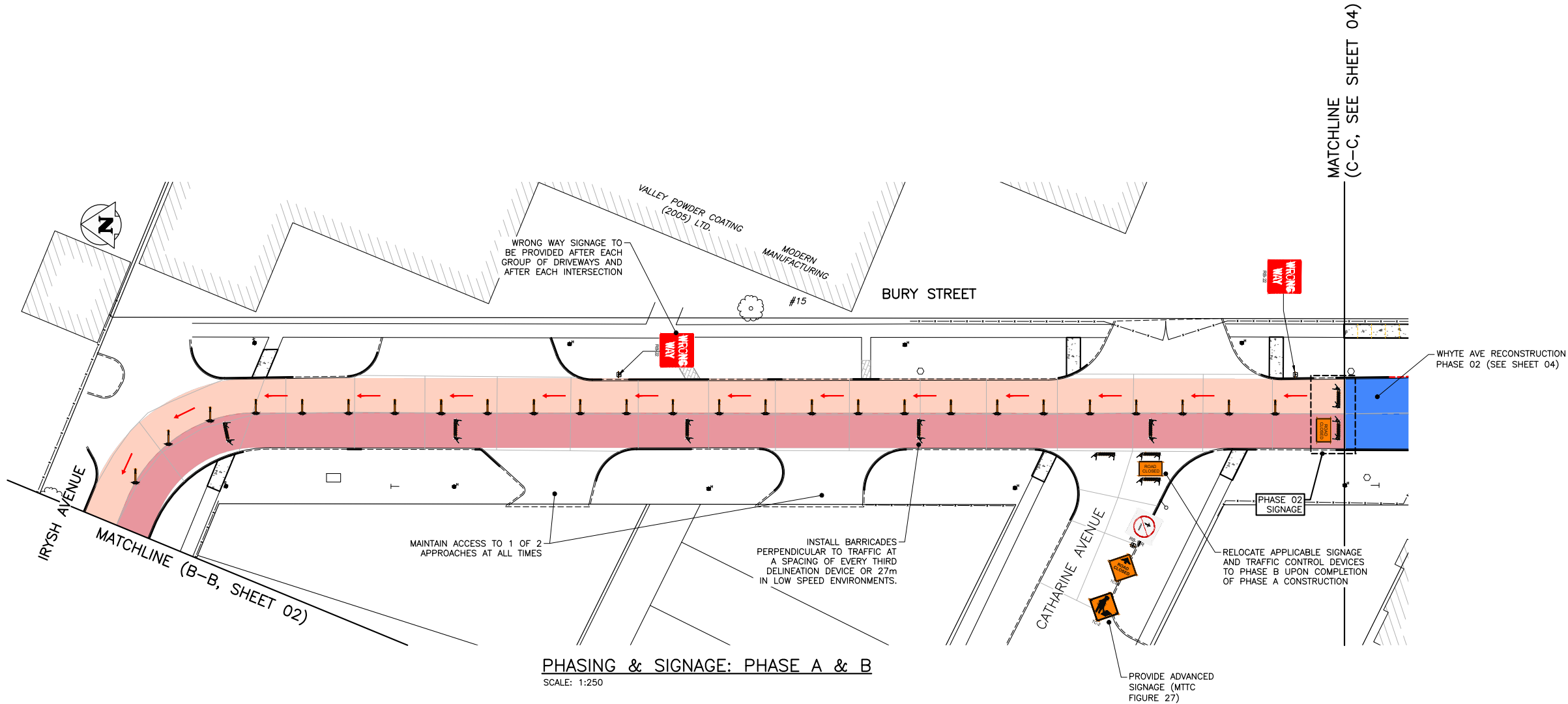
NO.	REVISIONS	DATE	BY

THE CITY OF WINNIPEG
PUBLIC WORKS DEPARTMENT
ENGINEERING DIVISION

PROJECT TITLE	2025 LOCAL STREET RENEWAL PROGRAM	SHEET OF	02 10
COMPUTER FILE NAME	24-0107-014	FIGURE	F-0100

PHASING & SIGNAGE PLAN:
IRYSH AVE: MINOR REHABILITATION

Files: \\wpg-fhs\p-data\Projects\2024\24-0107-014\Draw\Trans\24-0107-014_309-2025_F-ALL_Signage and Phasing Plans - Tab\F-0101 Plotted By: TTron 25/04/09 [Wed 10:31am]



PHASING & SIGNAGE: PHASE A & B
SCALE: 1:250

TRAFFIC MANAGEMENT: BURY STREET THIN BITUMINUS OVERLAY

1. PERFORM WORK IN TWO PHASES, LANE-AT-A-TIME.
2. PHASE A AND B COMMENCES FOLLOWING COMPLETION OF WHYTE AVENUE PHASE 02 (SEE SHEET 04).

↔ PEDESTRIANS
→ TEMPORARY TRAFFIC FLOW

GENERAL NOTES:

1. ALL TEMPORARY TRAFFIC CONTROL TO BE IN ACCORDANCE WITH THE LATEST MANUAL OF TEMPORARY TRAFFIC CONTROL ON CITY STREETS (MTTC) AT TENDER.
2. PERFORM WORK IN PHASES & STAGES TO MINIMIZE IMPACT TO TRAFFIC FLOW AND ACCESS TO RESIDENCES.
3. NOT ALL REQUIRED SIGNAGE IS SHOWN FOR EACH PHASE & SUB-PHASE. ADDITIONAL SIGNAGE TO PROVIDED IN ACCORDANCE WITH THE MTTC.
4. THE PERMANENT POSTED SPEED LIMIT OF 50 KM/HR SHALL BE USED FOR ALL TAPER LENGTHS AND OTHER CRITERIA IN THE MTTC.
5. CONTRACTOR SHALL SUBMIT THE PEDESTRIAN ACCESSIBILITY PLAN FOR REVIEW & ACCEPTANCE BY THE CONTRACT ADMINISTRATOR.
6. CONTRACTOR SHALL BE RESPONSIBLE FOR ALL PERMITS, THE SUPPLY, PLACEMENT & MAINTENANCE OF ALL TEMPORARY TRAFFIC CONTROL SIGNAGE IN ACCORDANCE WITH THE TENDER.
7. ALL LANE CLOSURE REQUESTS MUST BE SUBMITTED THROUGH THE CONTRACT ADMINISTRATOR & ARE SUBJECT TO THE APPROVAL OF THE TRAFFIC MANAGEMENT BRANCH.
8. CONTRACTOR TO PROVIDE FLAGPERSONS IN ACCORDANCE WITH THE MTTC WHEN MOVING MATERIALS OR EQUIPMENT INTO OR OUT OF TRAFFIC.
9. CONTRACTOR SHALL PROVIDE FLAGPERSONS DURING ALL ASPHALT PLACEMENT AT THE PROJECT LIMITS TO MINIMIZE IMPACT TO TRAFFIC.
10. WHEN FLAGPERSONS ARE PRESENT, FLAGPERSON SIGNAGE MUST BE PLACED IN ACCORDANCE WITH THE MTTC.

11. WHEN FLAGPERSONS ARE NOT PRESENT, THE FLAGPERSON SIGNAGE MUST BE REMOVED OR HIDDEN.
12. PROVIDE TEMPORARY RAMPS & CROSSING WHERE DIRECTED BY CONTRACT ADMINISTRATOR & IN ACCORDANCE WITH THE ACCESSIBILITY PLAN FOR PEDESTRIAN CROSSINGS WHILE PERFORMING WORK IN THE INTERSECTIONS AND APPROACHES.
13. INSTALL WARNING FLAGS IN ACCORDANCE WITH MTTC 3.07.04 ON THE FIRST WARNING SIGN IN EACH LANE DROP TAPER.
14. WHERE A LANE IS REQUIRED TO BE CLOSED ON MAJOR INTERSECTING STREETS PERFORM THE WORK ON THE TIE-IN DURING OFF PEAK-HOURS.
15. TEMPORARY TRANSIT LANDINGS WILL BE REQUIRED FOR ANY TEMPORARY TRANSIT STOP RELOCATIONS IN ACCORDANCE WITH THE MTTC.
16. CONTRACTOR TO MONITOR & MAINTAIN THE TEMPORARY SIGNAGE FOR THE DURATION OF THE PROJECT & MODIFY AS NEEDED FOR EACH STAGE OF THE WORKS.
17. CONTRACTOR TO REMEDY ANY SIGNAGE DEEMED INSUFFICIENT OR INCORRECT AS DIRECTED BY THE CONTRACT ADMINISTRATOR OR TRAFFIC MANAGEMENT.
18. STAGE SIDEWALK WORK SUCH THAT PEDESTRIAN ACCESS IS MAINTAINED ALONG ONE SIDE OF EACH ROADWAY AT ALL TIMES.
19. PROVIDE ADVANCED CONSTRUCTION & SIDEWALK CLOSED/DETOUR SIGNAGE IN ACCORDANCE WITH THE MTTC. PROVIDE SMALL CONES IN CENTRE WHERE BARRICADES. GUIDE PEDESTRIANS THROUGH THE CONSTRUCTION ZONE.

■ PHASE A LANE CLOSURE
■ PHASE B LANE CLOSURE
■ PHASE 01 LANE CLOSURE
■ PHASE 02 LANE CLOSURE
↔ PEDESTRIANS
→ TEMPORARY TRAFFIC FLOW

PROPERTY LIMITS DELINEATION

DELINEATION OF PROPERTY LIMITS AS SHOWN ON THIS DWG DOES NOT REPRESENT A "LEGAL SURVEY". KGS GROUP MAKES NO REPRESENTATION OR WARRANTY AS TO THE ACCURACY OF PROPERTY LIMITS DELINEATED ON THIS DWG, NOR ON THE DIMENSIONAL ACCURACY OF DWG FEATURES RELATIVE TO THOSE PROPERTY LIMITS.

METRIC

WHOLE NUMBERS INDICATE MILLIMETRES
DECIMALIZED NUMBERS INDICATE METRES

PRELIMINARY
NOT TO BE USED FOR CONSTRUCTION

A	ISSUED FOR REVIEW	2025/04/08	CR
NO.	REVISIONS	DATE	BY

 THE CITY OF WINNIPEG
PUBLIC WORKS DEPARTMENT
ENGINEERING DIVISION

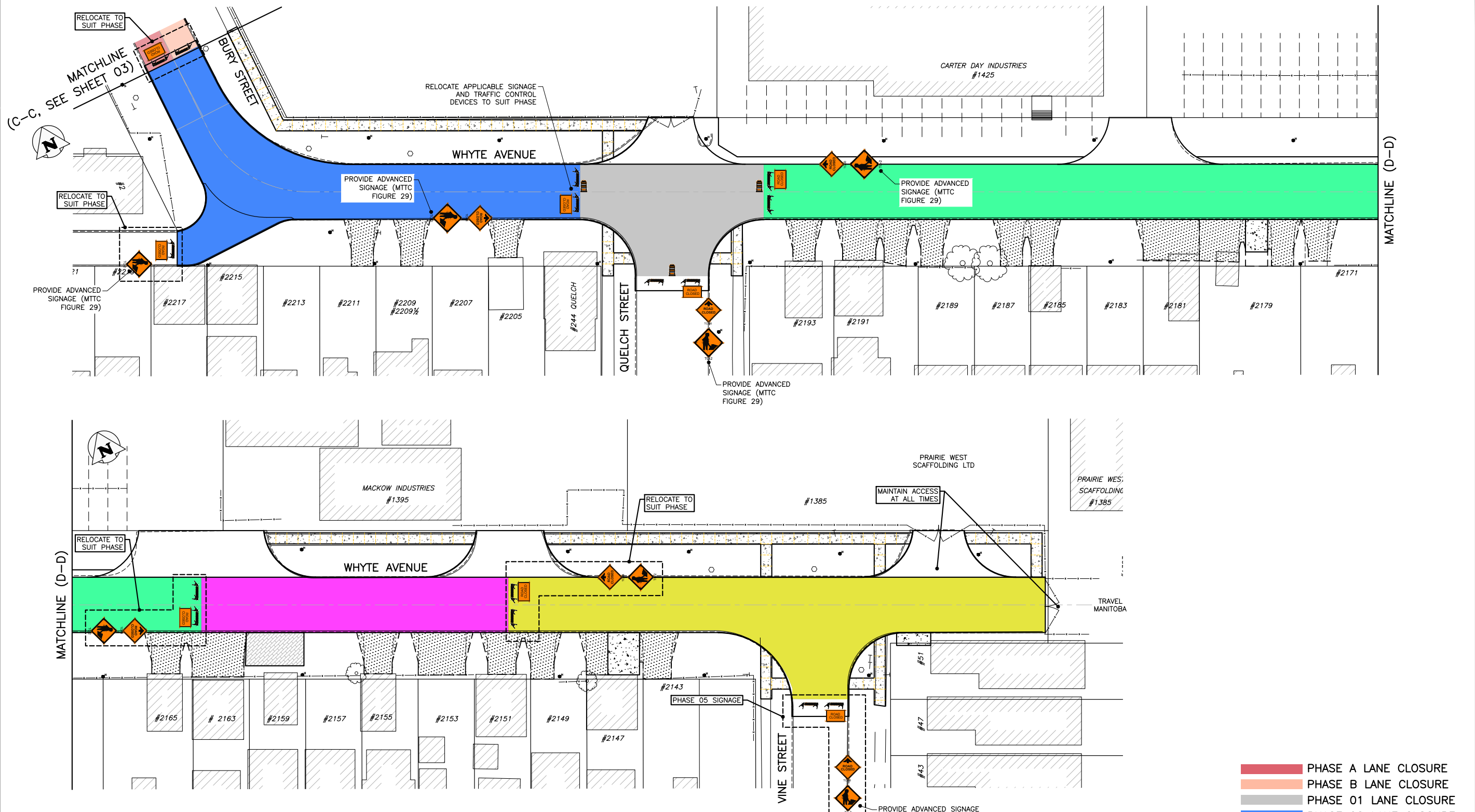
PROJECT TITLE
2025 LOCAL STREET RENEWAL PROGRAM

PHASING & SIGNAGE PLAN:
BURY ST: THIN BITUMINUS OVERLAY

TENDER NO. 309-2025

SHEET	OF
03	10
COMPUTER FILE NAME	
24-0107-014	
FIGURE	
F-0101	

Files: \\wpg-fs1\p-data\Projects\2024\24-0107-014\Drawings\Trans\24-0107-014_309-2025_F-ALL Signage and Phasing Plans - Tab F-0102 Plotted By: TTron 25/04/09 [Wed 10:31am]



GENERAL NOTES:

1. ALL TEMPORARY TRAFFIC CONTROL TO BE IN ACCORDANCE WITH THE LATEST MANUAL OF TEMPORARY TRAFFIC CONTROL ON CITY STREETS (MTTC) AT TENDER.
2. PERFORM WORK IN PHASES & STAGES TO MINIMIZE IMPACT TO TRAFFIC FLOW AND ACCESS TO RESIDENCES.
3. NOT ALL REQUIRED SIGNAGE IS SHOWN FOR EACH PHASE & SUB-PHASE. ADDITIONAL SIGNAGE TO PROVIDED IN ACCORDANCE WITH THE MTTC.
4. THE PERMANENT POSTED SPEED LIMIT OF 50 KM/HR SHALL BE USED FOR ALL TAPER LENGTHS AND OTHER CRITERIA IN THE MTTC.
5. CONTRACTOR SHALL SUBMIT THE PEDESTRIAN ACCESSIBILITY PLAN FOR REVIEW & ACCEPTANCE BY THE CONTRACT ADMINISTRATOR.
6. CONTRACTOR SHALL BE RESPONSIBLE FOR ALL PERMITS, THE SUPPLY, PLACEMENT & MAINTENANCE OF ALL TEMPORARY TRAFFIC CONTROL SIGNAGE IN ACCORDANCE WITH THE TENDER.
7. ALL LANE CLOSURE REQUESTS MUST BE SUBMITTED THROUGH THE CONTRACT ADMINISTRATOR & ARE SUBJECT TO THE APPROVAL OF THE TRAFFIC MANAGEMENT BRANCH.
8. CONTRACTOR TO PROVIDE FLAGPERSONS IN ACCORDANCE WITH THE MTTC WHEN MOVING MATERIALS OR EQUIPMENT INTO OR OUT OF TRAFFIC.
9. CONTRACTOR SHALL PROVIDE FLAGPERSONS DURING ALL ASPHALT PLACEMENT AT THE PROJECT LIMITS TO MINIMIZE IMPACT TO TRAFFIC.
10. WHEN FLAGPERSONS ARE PRESENT, FLAGPERSON SIGNAGE MUST BE PLACED IN ACCORDANCE WITH THE MTTC.
11. WHEN FLAGPERSONS ARE NOT PRESENT, THE FLAGPERSON SIGNAGE MUST BE REMOVED OR HIDDEN.
12. PROVIDE TEMPORARY RAMPS & CROSSING WHERE DIRECTED BY CONTRACT ADMINISTRATOR & IN ACCORDANCE WITH THE ACCESSIBILITY PLAN FOR PEDESTRIAN CROSSINGS WHILE PERFORMING WORK IN THE INTERSECTIONS AND APPROACHES.
13. INSTALL WARNING FLAGS IN ACCORDANCE WITH MTTC 3.07.04 ON THE FIRST WARNING SIGN IN EACH LANE DROP TAPER.
14. WHERE A LANE IS REQUIRED TO BE CLOSED ON MAJOR INTERSECTING STREETS PERFORM THE WORK ON THE TIE-IN DURING OFF PEAK-HOURS.
15. TEMPORARY TRANSIT LANDINGS WILL BE REQUIRED FOR ANY TEMPORARY TRANSIT STOP RELOCATIONS IN ACCORDANCE WITH THE MTTC.
16. CONTRACTOR TO MONITOR & MAINTAIN THE TEMPORARY SIGNAGE FOR THE DURATION OF THE PROJECT & MODIFY AS NEEDED FOR EACH STAGE OF THE WORKS.
17. CONTRACTOR TO REMEDY ANY SIGNAGE DEEMED INSUFFICIENT OR INCORRECT AS DIRECTED BY THE CONTRACT ADMINISTRATOR OR TRAFFIC MANAGEMENT.
18. STAGE SIDEWALK WORK SUCH THAT PEDESTRIAN ACCESS IS MAINTAINED ALONG ONE SIDE OF EACH ROADWAY AT ALL TIMES.
19. PROVIDE ADVANCED CONSTRUCTION & SIDEWALK CLOSED/DETOUR SIGNAGE IN ACCORDANCE WITH THE MTTC. PROVIDE SMALL CONES IN CENTRE WHERE BARRICADES. GUIDE PEDESTRIANS THROUGH THE CONSTRUCTION ZONE.

PROPERTY LIMITS DELINEATION


DELINERATION OF PROPERTY LIMITS AS SHOWN ON THIS DWG DOES NOT REPRESENT A "LEGAL SURVEY". KGS GROUP MAKES NO REPRESENTATION OR WARRANTY AS TO THE ACCURACY OF PROPERTY LIMITS DELINEATED ON THIS DWG, NOR ON THE DIMENSIONAL ACCURACY OF DWG FEATURES RELATIVE TO THOSE PROPERTY LIMITS.

METRIC
WHOLE NUMBERS INDICATE MILLIMETRES
DECIMALIZED NUMBERS INDICATE METRES

- PHASE A LANE CLOSURE
- PHASE B LANE CLOSURE
- PHASE O1 LANE CLOSURE
- PHASE O2 LANE CLOSURE
- PHASE O3 LANE CLOSURE
- PHASE O4 LANE CLOSURE
- PHASE O5 LANE CLOSURE

PRELIMINARY
NOT TO BE USED FOR CONSTRUCTION

A		ISSUED FOR REVIEW	2025/04/08	CR
NO.	REVISIONS	DATE	BY	



THE CITY OF WINNIPEG
PUBLIC WORKS DEPARTMENT
ENGINEERING DIVISION

KGS GROUP

PROJECT TITLE
2025 LOCAL STREET RENEWAL PROGRAM

PHASING & SIGNAGE PLAN:
WHYTE AVE: CONCRETE RECONSTRUCTION

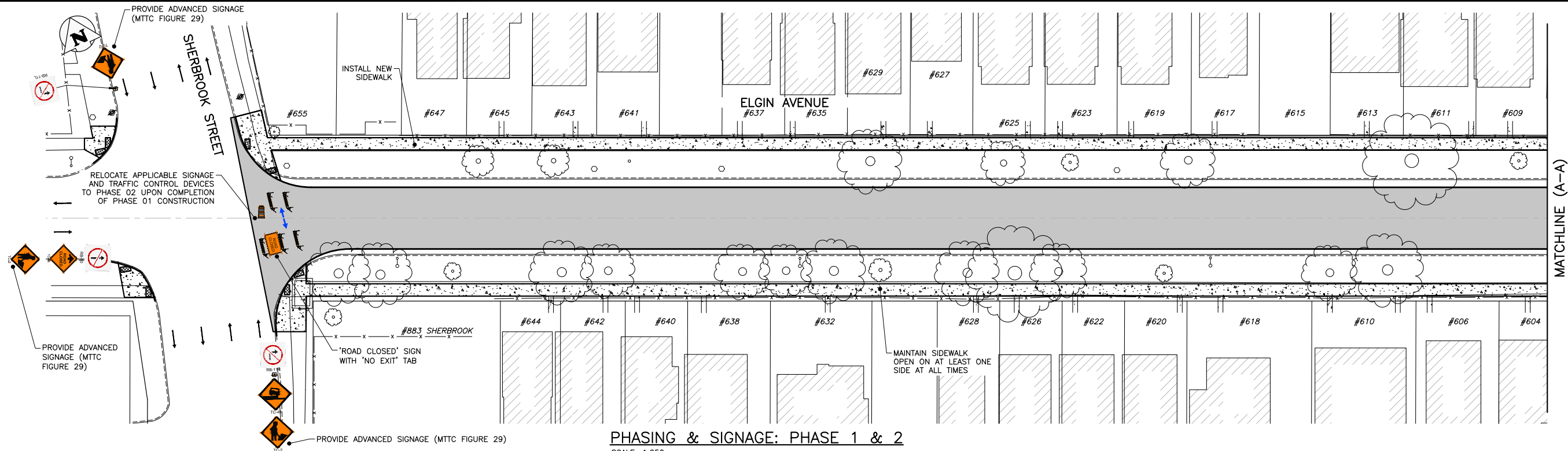
SHEET OF
04 10

COMPUTER FILE NAME
24-0107-014

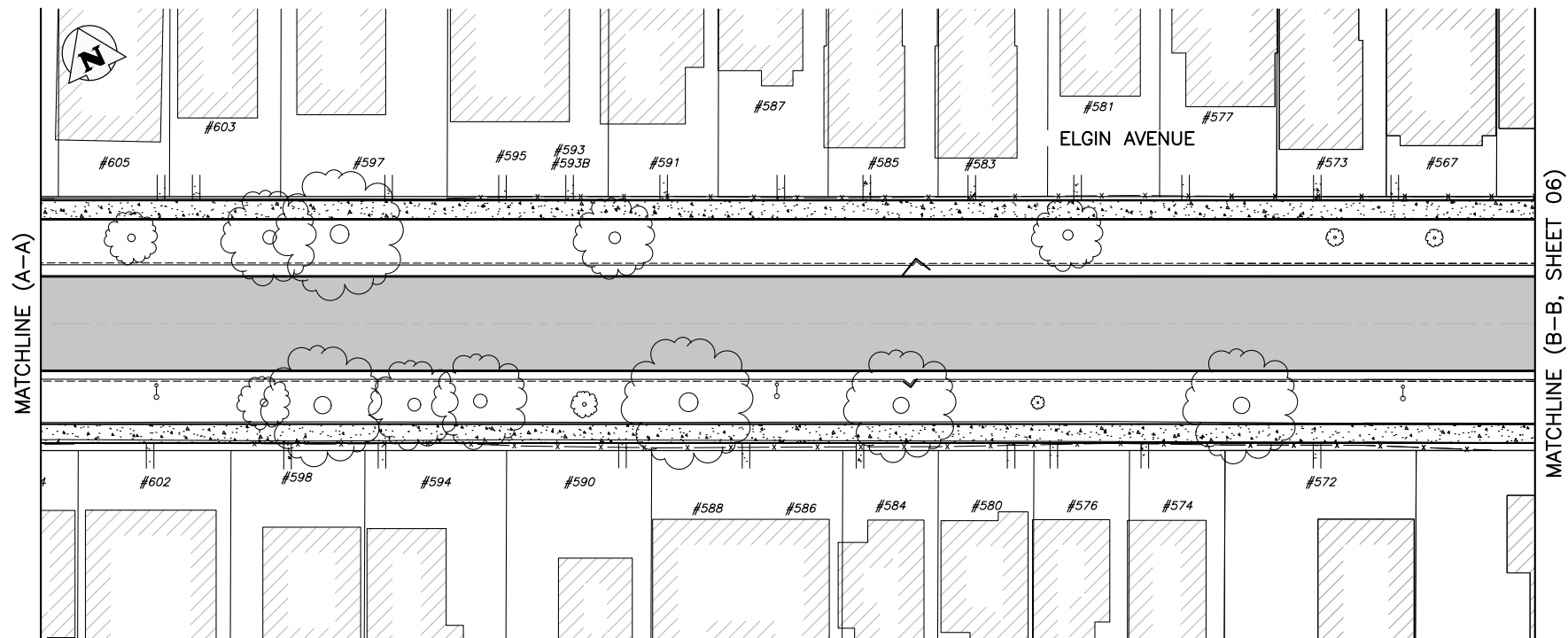
FIGURE
F-0102

TENDER NO. 309-2025

Files: \\p99-fil\p-ct\Projects\2024\24-0107-014\Drawings\Trans\24-0107-014_309-2025_F-ALL Signage and Phasing Plans - TabF-0200 Plotted By: TTran 25/04/09 [Wed 10:32am] A1 (841x594) PLOT SCALE: 1:1



PHASING & SIGNAGE: PHASE 1 & 2
SCALE: 1:250



PHASING & SIGNAGE: PHASE 1 & 2
SCALE: 1:250

GENERAL NOTES:

- ALL TEMPORARY TRAFFIC CONTROL TO BE IN ACCORDANCE WITH THE LATEST MANUAL OF TEMPORARY TRAFFIC CONTROL ON CITY STREETS (MTTC) AT TENDER.
- PERFORM WORK IN PHASES & STAGES TO MINIMIZE IMPACT TO TRAFFIC FLOW AND ACCESS TO RESIDENCES.
- NOT ALL REQUIRED SIGNAGE IS SHOWN FOR EACH PHASE & SUB-PHASE. ADDITIONAL SIGNAGE TO PROVIDED IN ACCORDANCE WITH THE MTTC.
- THE PERMANENT POSTED SPEED LIMIT OF 50 KM/HR SHALL BE USED FOR ALL TAPER LENGTHS AND OTHER CRITERIA IN THE MTTC.
- CONTRACTOR SHALL SUBMIT THE PEDESTRIAN ACCESSIBILITY PLAN FOR REVIEW & ACCEPTANCE BY THE CONTRACT ADMINISTRATOR.
- CONTRACTOR SHALL BE RESPONSIBLE FOR ALL PERMITS, THE SUPPLY, PLACEMENT & MAINTENANCE OF ALL TEMPORARY TRAFFIC CONTROL SIGNAGE IN ACCORDANCE WITH THE TENDER.
- ALL LANE CLOSURE REQUESTS MUST BE SUBMITTED THROUGH THE CONTRACT ADMINISTRATOR & ARE SUBJECT TO THE APPROVAL OF THE TRAFFIC MANAGEMENT BRANCH.
- CONTRACTOR TO PROVIDE FLAGPERSONS IN ACCORDANCE WITH THE MTTC WHEN MOVING MATERIALS OR EQUIPMENT INTO OR OUT OF TRAFFIC.
- CONTRACTOR SHALL PROVIDE FLAGPERSONS DURING ALL ASPHALT PLACEMENT AT THE PROJECT LIMITS TO MINIMIZE IMPACT TO TRAFFIC.
- WHEN FLAGPERSONS ARE PRESENT, FLAGPERSON SIGNAGE MUST BE PLACED IN ACCORDANCE WITH THE MTTC.

- WHEN FLAGPERSONS ARE NOT PRESENT, THE FLAGPERSON SIGNAGE MUST BE REMOVED OR HIDDEN.
- PROVIDE TEMPORARY RAMPS & CROSSING WHERE DIRECTED BY CONTRACT ADMINISTRATOR & IN ACCORDANCE WITH THE ACCESSIBILITY PLAN FOR PEDESTRIAN CROSSINGS WHILE PERFORMING WORK IN THE INTERSECTIONS AND APPROACHES.
- INSTALL WARNING FLAGS IN ACCORDANCE WITH MTTC 3.07.04 ON THE FIRST WARNING SIGN IN EACH LANE DROP TAPER.
- WHERE A LANE IS REQUIRED TO BE CLOSED ON MAJOR INTERSECTING STREETS PERFORM THE WORK ON THE TIE-IN DURING OFF PEAK-HOURS.
- TEMPORARY TRANSIT LANDINGS WILL BE REQUIRED FOR ANY TEMPORARY TRANSIT STOP RELOCATIONS IN ACCORDANCE WITH THE MTTC.
- CONTRACTOR TO MONITOR & MAINTAIN THE TEMPORARY SIGNAGE FOR THE DURATION OF THE PROJECT & MODIFY AS NEEDED FOR EACH STAGE OF THE WORKS.
- CONTRACTOR TO REMEDY ANY SIGNAGE DEEMED INSUFFICIENT OR INCORRECT AS DIRECTED BY THE CONTRACT ADMINISTRATOR OR TRAFFIC MANAGEMENT.
- STAGE SIDEWALK WORK SUCH THAT PEDESTRIAN ACCESS IS MAINTAINED ALONG ONE SIDE OF EACH ROADWAY AT ALL TIMES.
- PROVIDE ADVANCED CONSTRUCTION & SIDEWALK CLOSED/DETOUR SIGNAGE IN ACCORDANCE WITH THE MTTC. PROVIDE SMALL CONES IN CENTRE WHERE BARRICADES. GUIDE PEDESTRIANS THROUGH THE CONSTRUCTION ZONE.

PHASE 01 LANE CLOSURE
PHASE 02 LANE CLOSURE
PEDESTRIANS

PROPERTY LIMITS DELINEATION


DELINEATION OF PROPERTY LIMITS AS SHOWN ON THIS DWG DOES NOT REPRESENT A "LEGAL SURVEY". KGS GROUP MAKES NO REPRESENTATION OR WARRANTY AS TO THE ACCURACY OF PROPERTY LIMITS DELINEATED ON THIS DWG, NOR ON THE DIMENSIONAL ACCURACY OF DWG FEATURES RELATIVE TO THOSE PROPERTY LIMITS.

METRIC

WHOLE NUMBERS INDICATE MILLIMETRES
DECIMALIZED NUMBERS INDICATE METRES

PRELIMINARY
NOT TO BE USED FOR CONSTRUCTION

NO.	REVISIONS	DATE	BY
A	ISSUED FOR REVIEW	2025/04/08	CR



THE CITY OF WINNIPEG
PUBLIC WORKS DEPARTMENT
ENGINEERING DIVISION

KGS
GROUP

PROJECT TITLE
2025 LOCAL STREET RENEWAL PROGRAM

PHASING & SIGNAGE PLAN:
ELGIN AVENUE & KATE STREET:
ASPHALT RECONSTRUCTION

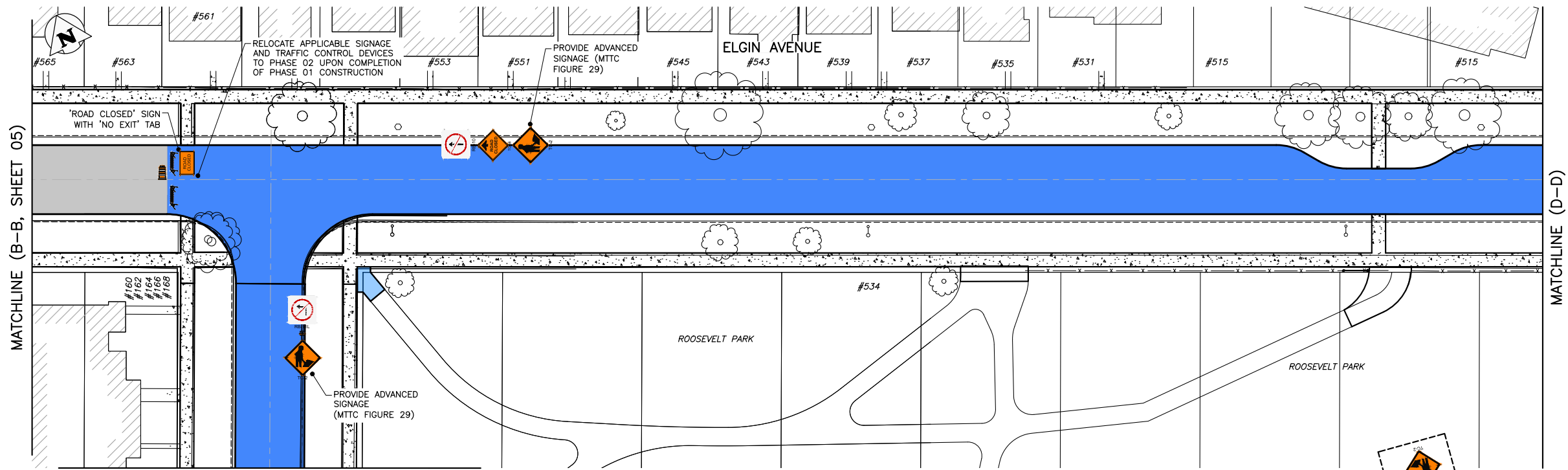
TENDER NO. 309-2025

SHEET OF
05 10

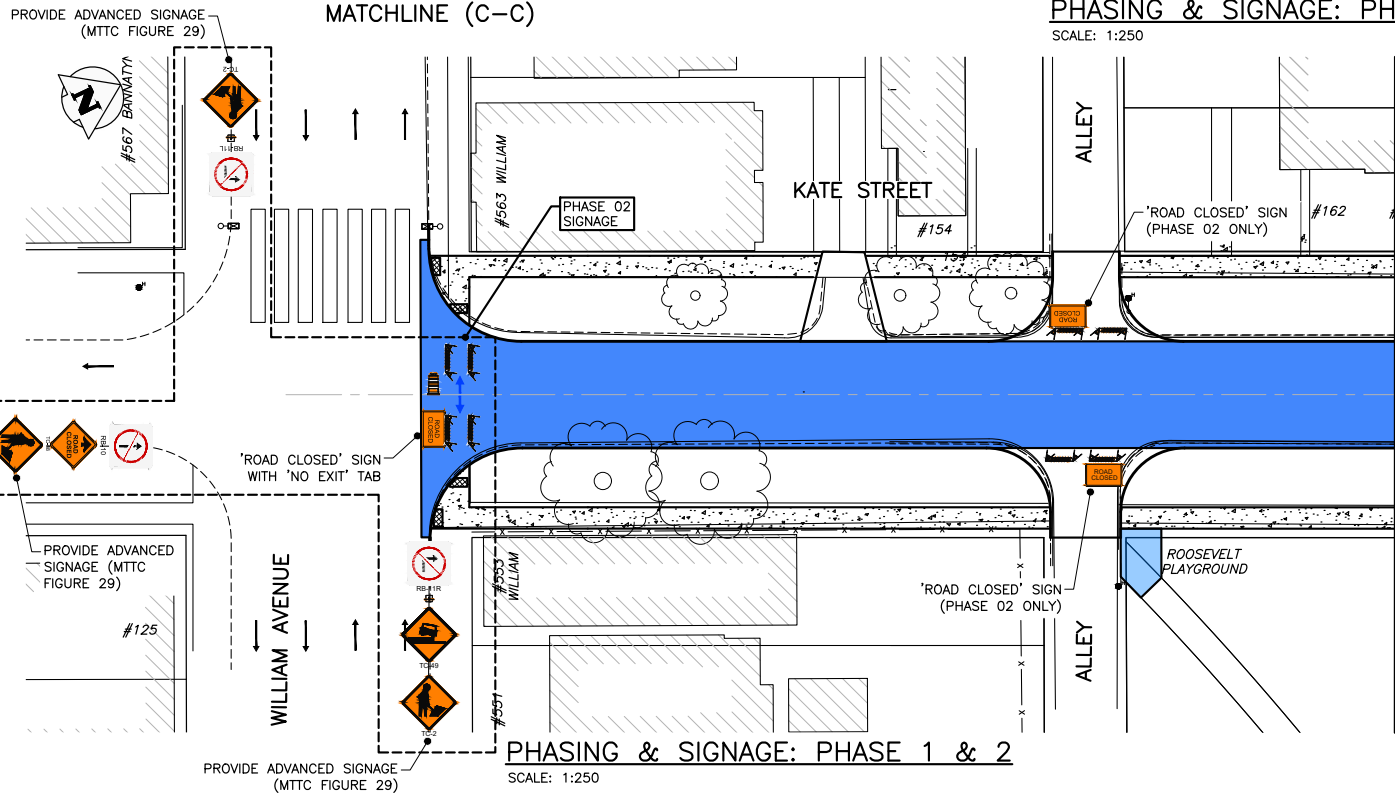
COMPUTER FILE NAME
24-0107-014

FIGURE
F-0200

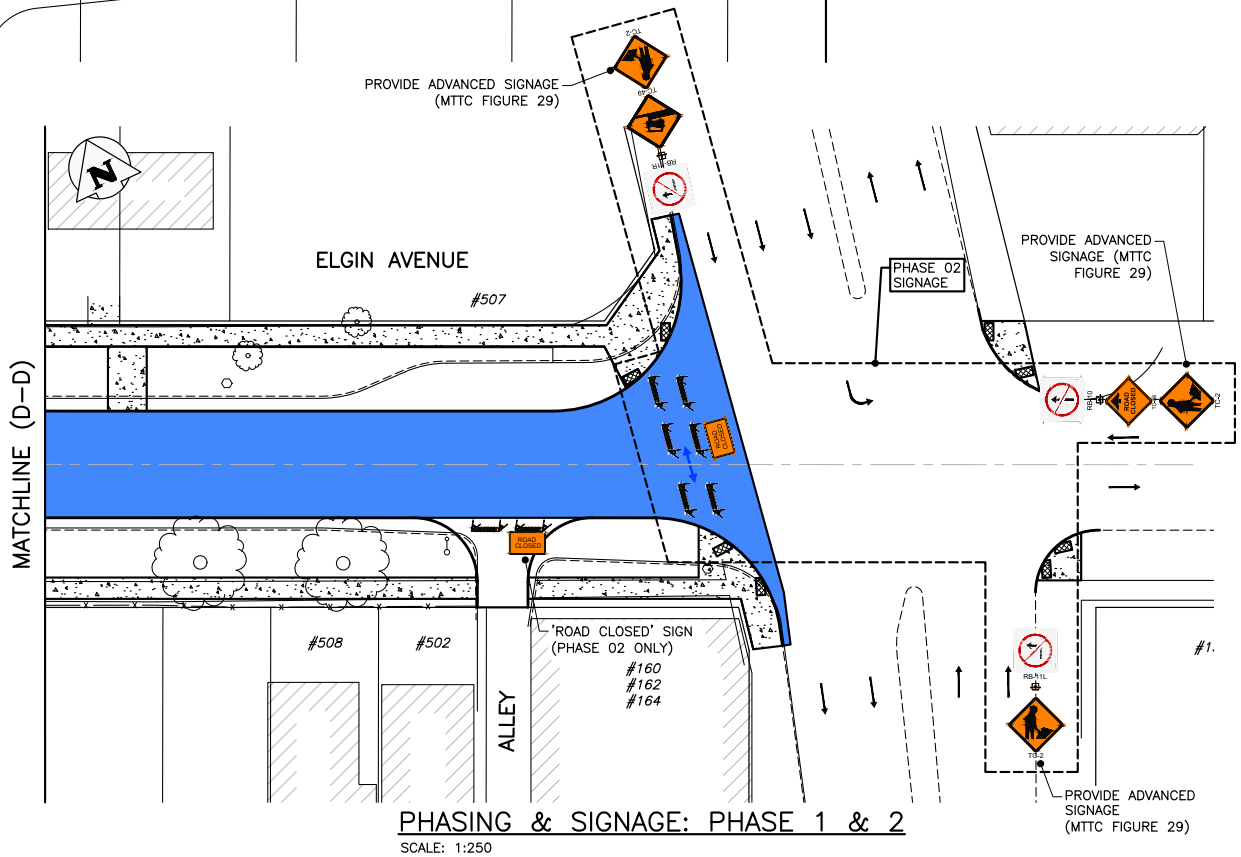
Files: \\vpp-fib\p-data\Projects\2024\24-0107-014\Drawings\Trans\24-0107-014_309-2025_F-ALL Signage and Phasing Plans - TabF-0201 Plotted By: TTran 25/04/09 [Wed 10:32am]



PHASING & SIGNAGE: PHASE 1 & 2
SCALE: 1:250



PHASING & SIGNAGE: PHASE 1 & 2
SCALE: 1:250



PHASING & SIGNAGE: PHASE 1 & 2
SCALE: 1:250

GENERAL NOTES:

1. ALL TEMPORARY TRAFFIC CONTROL TO BE IN ACCORDANCE WITH THE LATEST MANUAL OF TEMPORARY TRAFFIC CONTROL ON CITY STREETS (MTTC) AT TENDER.
2. PERFORM WORK IN PHASES & STAGES TO MINIMIZE IMPACT TO TRAFFIC FLOW AND ACCESS TO RESIDENCES.
3. NOT ALL REQUIRED SIGNAGE IS SHOWN FOR EACH PHASE & SUB-PHASE. ADDITIONAL SIGNAGE TO PROVIDED IN ACCORDANCE WITH THE MTTC.
4. THE PERMANENT POSTED SPEED LIMIT OF 50 KM/HR SHALL BE USED FOR ALL TAPER LENGTHS AND OTHER CRITERIA IN THE MTTC.
5. CONTRACTOR SHALL SUBMIT THE PEDESTRIAN ACCESSIBILITY PLAN FOR REVIEW & ACCEPTANCE BY THE CONTRACT ADMINISTRATOR.
6. CONTRACTOR SHALL BE RESPONSIBLE FOR ALL PERMITS, THE SUPPLY, PLACEMENT & MAINTENANCE OF ALL TEMPORARY TRAFFIC CONTROL SIGNAGE IN ACCORDANCE WITH THE TENDER.
7. ALL LANE CLOSURE REQUESTS MUST BE SUBMITTED THROUGH THE CONTRACT ADMINISTRATOR & ARE SUBJECT TO THE APPROVAL OF THE TRAFFIC MANAGEMENT BRANCH.
8. CONTRACTOR TO PROVIDE FLAGPERSONS IN ACCORDANCE WITH THE MTTC WHEN MOVING MATERIALS OR EQUIPMENT INTO OR OUT OF TRAFFIC.
9. CONTRACTOR SHALL PROVIDE FLAGPERSONS DURING ALL ASPHALT PLACEMENT AT THE PROJECT LIMITS TO MINIMIZE IMPACT TO TRAFFIC.
10. WHEN FLAGPERSONS ARE PRESENT, FLAGPERSON SIGNAGE MUST BE PLACED IN ACCORDANCE WITH THE MTTC.

11. WHEN FLAGPERSONS ARE NOT PRESENT, THE FLAGPERSON SIGNAGE MUST BE REMOVED OR HIDDEN.
12. PROVIDE TEMPORARY RAMPS & CROSSING WHERE DIRECTED BY CONTRACT ADMINISTRATOR & IN ACCORDANCE WITH THE ACCESSIBILITY PLAN FOR PEDESTRIAN CROSSINGS WHILE PERFORMING WORK IN THE INTERSECTIONS AND APPROACHES.
13. INSTALL WARNING FLAGS IN ACCORDANCE WITH MTTC 3.07.04 ON THE FIRST WARNING SIGN IN EACH LANE DROP TAPER.
14. WHERE A LANE IS REQUIRED TO BE CLOSED ON MAJOR INTERSECTING STREETS PERFORM THE WORK ON THE TIE-IN DURING OFF PEAK-HOURS.
15. TEMPORARY TRANSIT LANDINGS WILL BE REQUIRED FOR ANY TEMPORARY TRANSIT STOP RELOCATIONS IN ACCORDANCE WITH THE MTTC.
16. CONTRACTOR TO MONITOR & MAINTAIN THE TEMPORARY SIGNAGE FOR THE DURATION OF THE PROJECT & MODIFY AS NEEDED FOR EACH STAGE OF THE WORKS.
17. CONTRACTOR TO REMEDY ANY SIGNAGE DEEMED INSUFFICIENT OR INCORRECT AS DIRECTED BY THE CONTRACT ADMINISTRATOR OR TRAFFIC MANAGEMENT.
18. STAGE SIDEWALK WORK SUCH THAT PEDESTRIAN ACCESS IS MAINTAINED ALONG ONE SIDE OF EACH ROADWAY AT ALL TIMES.
19. PROVIDE ADVANCED CONSTRUCTION & SIDEWALK CLOSED/DETOUR SIGNAGE IN ACCORDANCE WITH THE MTTC. PROVIDE SMALL CONES IN CENTRE WHERE BARRICADES. GUIDE PEDESTRIANS THROUGH THE CONSTRUCTION ZONE.

PROPERTY LIMITS DELINEATION

DELINEATION OF PROPERTY LIMITS AS SHOWN ON THIS DWG DOES NOT REPRESENT A "LEGAL SURVEY". KGS GROUP MAKES NO REPRESENTATION OR WARRANTY AS TO THE ACCURACY OF PROPERTY LIMITS DELINEATED ON THIS DWG, NOR ON THE DIMENSIONAL ACCURACY OF DWG FEATURES RELATIVE TO THOSE PROPERTY LIMITS.

METRIC

WHOLE NUMBERS INDICATE MILLIMETRES
DECIMALIZED NUMBERS INDICATE METRES

PHASE 01 LANE CLOSURE
PHASE 02 LANE CLOSURE
PEDESTRIANS

PRELIMINARY
NOT TO BE USED FOR CONSTRUCTION

A		ISSUED FOR REVIEW	2025/04/08	CR
NO.	REVISIONS	DATE	BY	

THE CITY OF WINNIPEG
PUBLIC WORKS DEPARTMENT
ENGINEERING DIVISION

PROJECT TITLE
2025 LOCAL STREET RENEWAL PROGRAM

PHASING & SIGNAGE PLAN:
ELGIN AVENUE & KATE STREET:
ASPHALT RECONSTRUCTION

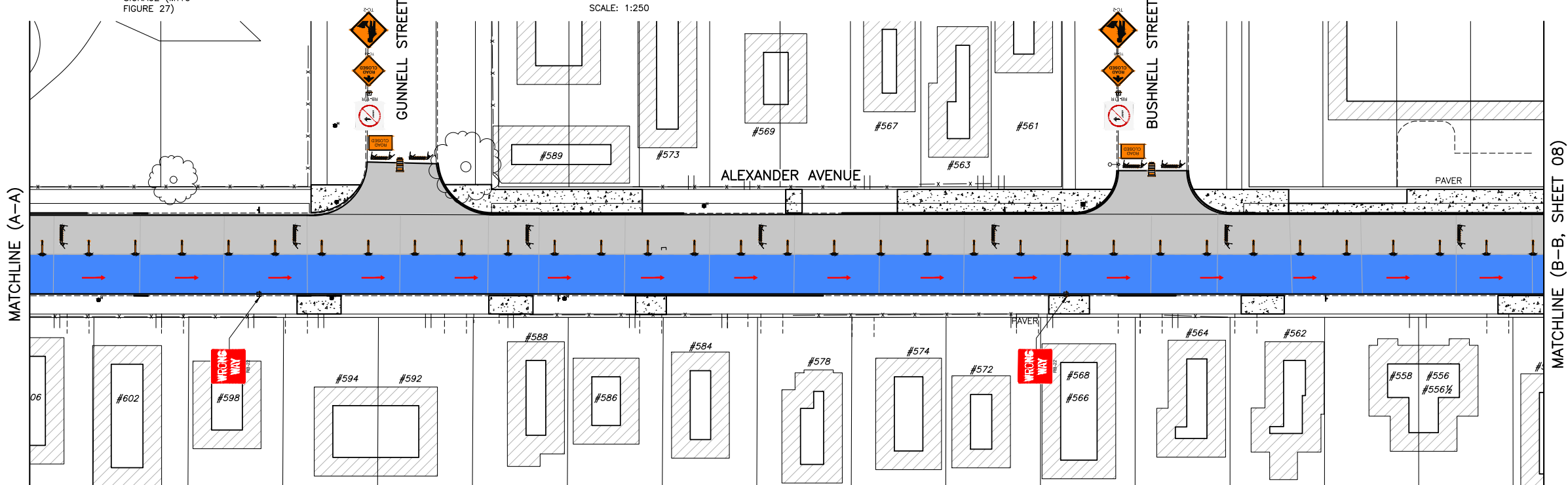
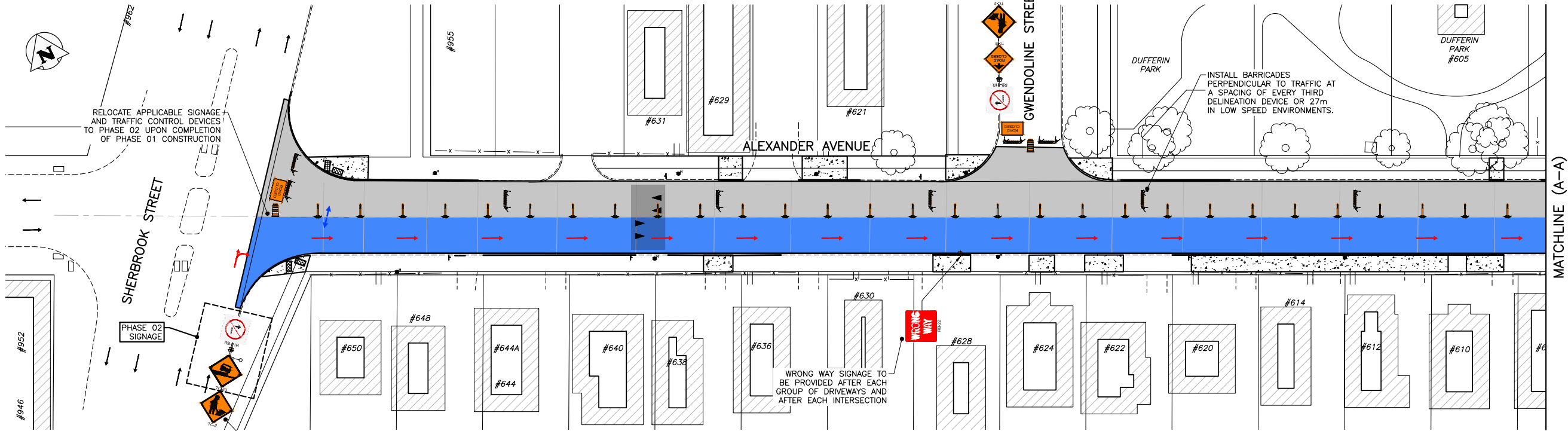
TENDER NO. 309-2025

SHEET OF
06 10

COMPUTER FILE NAME
24-0107-014

FIGURE
F-0201

Files: \\p99-fib\p-data\Projects\2024\24-0107-014\Draw\Trans\24-0107-014_309-2025_F-ALL Signage and Phasing Plans - Tab\F-0300 Plotted By: TTron 25/04/09 [Wed 10:34am]
A1 (841x594) PLOT SCALE: 1:1



GENERAL NOTES:

1. ALL TEMPORARY TRAFFIC CONTROL TO BE IN ACCORDANCE WITH THE LATEST MANUAL OF TEMPORARY TRAFFIC CONTROL ON CITY STREETS (MTTC) AT TENDER.
2. PERFORM WORK IN PHASES & STAGES TO MINIMIZE IMPACT TO TRAFFIC FLOW AND ACCESS TO RESIDENCES.
3. NOT ALL REQUIRED SIGNAGE IS SHOWN FOR EACH PHASE & SUB-PHASE. ADDITIONAL SIGNAGE TO PROVIDED IN ACCORDANCE WITH THE MTTC.
4. THE PERMANENT POSTED SPEED LIMIT OF 50 KM/HR SHALL BE USED FOR ALL TAPER LENGTHS AND OTHER CRITERIA IN THE MTTC.
5. CONTRACTOR SHALL SUBMIT THE PEDESTRIAN ACCESSIBILITY PLAN FOR REVIEW & ACCEPTANCE BY THE CONTRACT ADMINISTRATOR.
6. CONTRACTOR SHALL BE RESPONSIBLE FOR ALL PERMITS, THE SUPPLY, PLACEMENT & MAINTENANCE OF ALL TEMPORARY TRAFFIC CONTROL SIGNAGE IN ACCORDANCE WITH THE TENDER.
7. ALL LANE CLOSURE REQUESTS MUST BE SUBMITTED THROUGH THE CONTRACT ADMINISTRATOR & ARE SUBJECT TO THE APPROVAL OF THE TRAFFIC MANAGEMENT BRANCH.
8. CONTRACTOR TO PROVIDE FLAGPERSONS IN ACCORDANCE WITH THE MTTC WHEN MOVING MATERIALS OR EQUIPMENT INTO OR OUT OF TRAFFIC.
9. CONTRACTOR SHALL PROVIDE FLAGPERSONS DURING ALL ASPHALT PLACEMENT AT THE PROJECT LIMITS TO MINIMIZE IMPACT TO TRAFFIC.
10. WHEN FLAGPERSONS ARE PRESENT, FLAGPERSON SIGNAGE MUST BE PLACED IN ACCORDANCE WITH THE MTTC.

11. WHEN FLAGPERSONS ARE NOT PRESENT, THE FLAGPERSON SIGNAGE MUST BE REMOVED OR HIDDEN.
12. PROVIDE TEMPORARY RAMPS & CROSSING WHERE DIRECTED BY CONTRACT ADMINISTRATOR & IN ACCORDANCE WITH THE ACCESSIBILITY PLAN FOR PEDESTRIAN CROSSINGS WHILE PERFORMING WORK IN THE INTERSECTIONS AND APPROACHES.
13. INSTALL WARNING FLAGS IN ACCORDANCE WITH MTTC 3.07.04 ON THE FIRST WARNING SIGN IN EACH LANE DROP TAPER.
14. WHERE A LANE IS REQUIRED TO BE CLOSED ON MAJOR INTERSECTING STREETS PERFORM THE WORK ON THE TIE-IN DURING OFF PEAK-HOURS.
15. TEMPORARY TRANSIT LANDINGS WILL BE REQUIRED FOR ANY TEMPORARY TRANSIT STOP RELOCATIONS IN ACCORDANCE WITH THE MTTC.
16. CONTRACTOR TO MONITOR & MAINTAIN THE TEMPORARY SIGNAGE FOR THE DURATION OF THE PROJECT & MODIFY AS NEEDED FOR EACH STAGE OF THE WORKS.
17. CONTRACTOR TO REMEDY ANY SIGNAGE DEEMED INSUFFICIENT OR INCORRECT AS DIRECTED BY THE CONTRACT ADMINISTRATOR OR TRAFFIC MANAGEMENT.
18. STAGE SIDEWALK WORK SUCH THAT PEDESTRIAN ACCESS IS MAINTAINED ALONG ONE SIDE OF EACH ROADWAY AT ALL TIMES.
19. PROVIDE ADVANCED CONSTRUCTION & SIDEWALK CLOSED/DETOUR SIGNAGE IN ACCORDANCE WITH THE MTTC. PROVIDE SMALL CONES IN CENTRE WHERE BARRICADES. GUIDE PEDESTRIANS THROUGH THE CONSTRUCTION ZONE.

PROPERTY LIMITS DELINEATION

DELINEATION OF PROPERTY LIMITS AS SHOWN ON THIS DWG DOES NOT REPRESENT A "LEGAL SURVEY". KGS GROUP MAKES NO REPRESENTATION OR WARRANTY AS TO THE ACCURACY OF PROPERTY LIMITS DELINEATED ON THIS DWG, NOR ON THE DIMENSIONAL ACCURACY OF DWG FEATURES RELATIVE TO THOSE PROPERTY LIMITS.

METRIC


WHOLE NUMBERS INDICATE MILLIMETRES
DECIMALIZED NUMBERS INDICATE METRES

- PHASE 01 LANE CLOSURE
- PHASE 02 LANE CLOSURE
- PEDESTRIANS
- TEMPORARY TRAFFIC FLOW

TENDER NO. 309-2025

PRELIMINARY
NOT TO BE USED FOR CONSTRUCTION

NO.	REVISIONS	DATE	BY
A	ISSUED FOR REVIEW	2025/04/08	CR



THE CITY OF WINNIPEG
PUBLIC WORKS DEPARTMENT
ENGINEERING DIVISION

PROJECT TITLE
2025 LOCAL STREET RENEWAL PROGRAM

PHASING & SIGNAGE PLAN:
ALEXANDER AVE: MINOR REHABILITATION

SHEET
07
OF
10

COMPUTER FILE NAME
24-0107-014

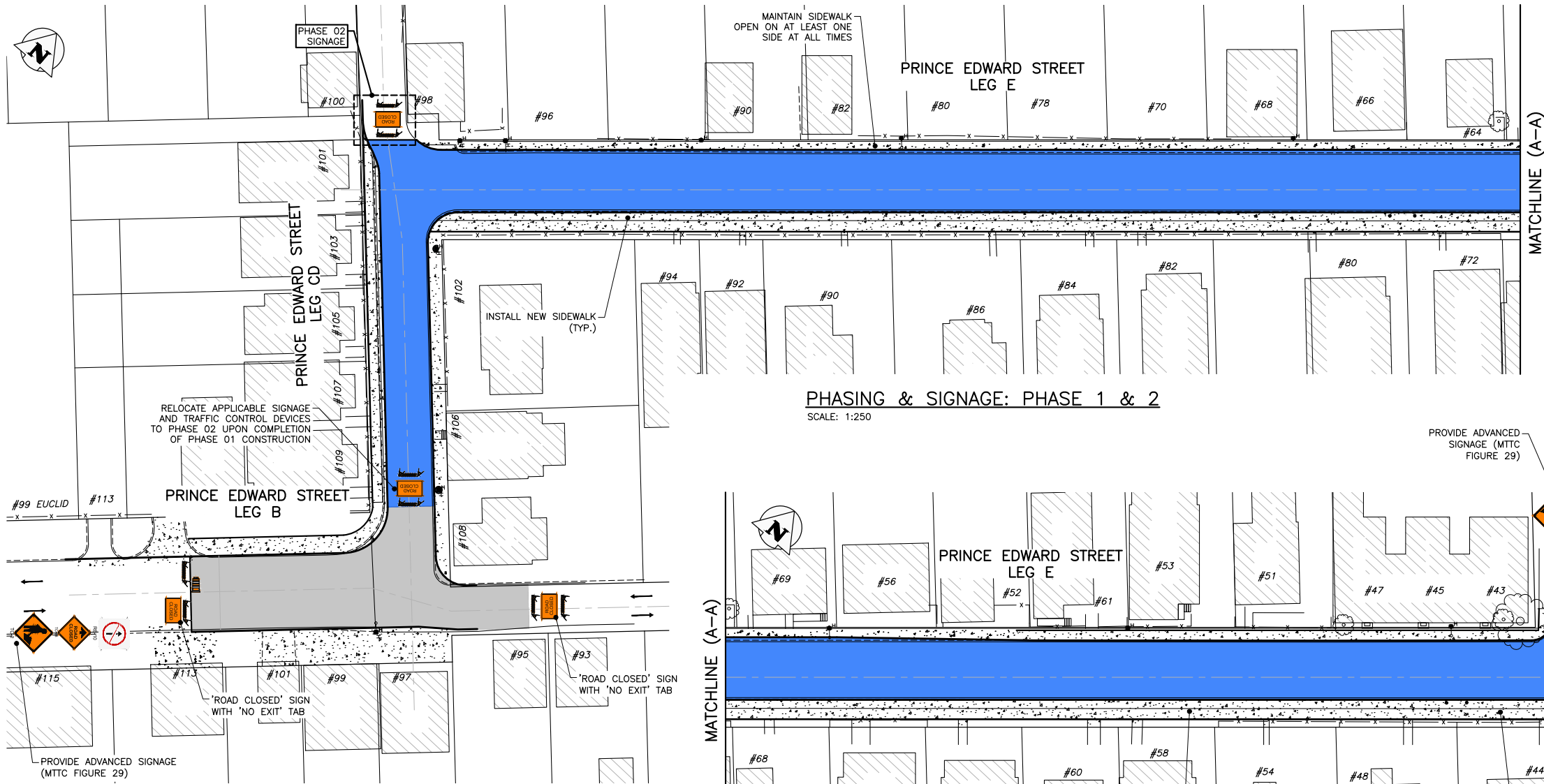
FIGURE
F-0300

KGS
GROUP

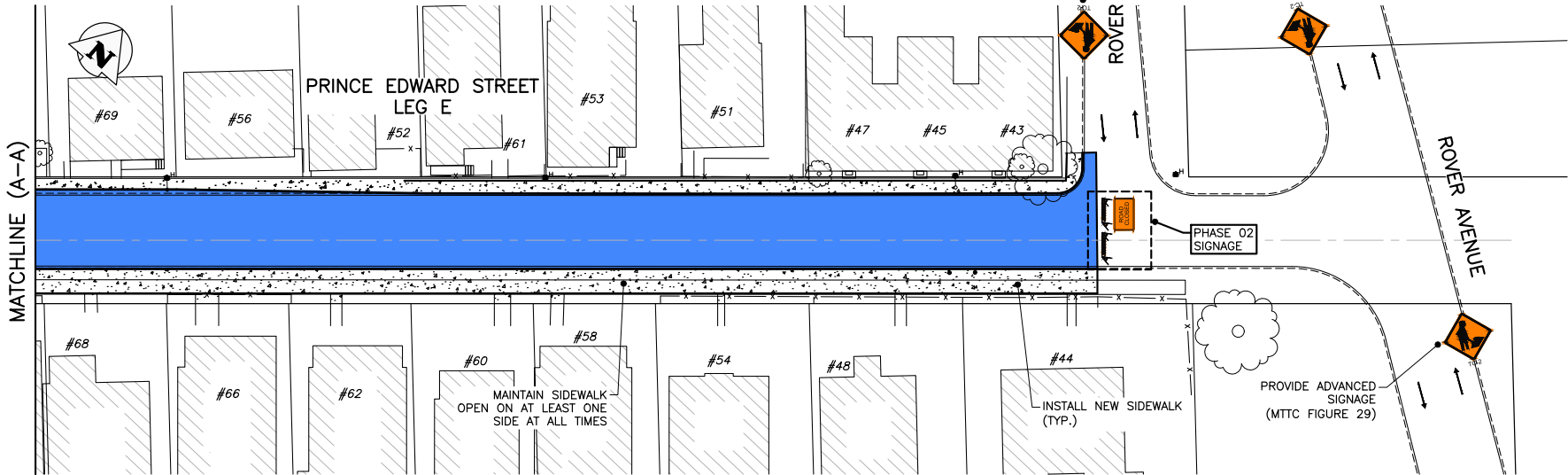
MATCHLINE (A-A)

MATCHLINE (B-B, SHEET 08)

Files: \\wpg-fs1\p-data\Projects\2024\24-0107-014\Drawings\Trans\24-0107-014_309-2025_F-ALL Signage and Phasing Plans - TabF-0400 Plotted By: TTron 25/04/09 [Wed 10:35am] A1 (841x594) PLOT SCALE: 1:1



PHASING & SIGNAGE: PHASE 1 & 2
SCALE: 1:250



PHASING & SIGNAGE: PHASE 1 & 2
SCALE: 1:250

GENERAL NOTES:

1. ALL TEMPORARY TRAFFIC CONTROL TO BE IN ACCORDANCE WITH THE LATEST MANUAL OF TEMPORARY TRAFFIC CONTROL ON CITY STREETS (MTTC) AT TENDER.
2. PERFORM WORK IN PHASES & STAGES TO MINIMIZE IMPACT TO TRAFFIC FLOW AND ACCESS TO RESIDENCES.
3. NOT ALL REQUIRED SIGNAGE IS SHOWN FOR EACH PHASE & SUB-PHASE. ADDITIONAL SIGNAGE TO PROVIDED IN ACCORDANCE WITH THE MTTC.
4. THE PERMANENT POSTED SPEED LIMIT OF 50 KM/HR SHALL BE USED FOR ALL TAPER LENGTHS AND OTHER CRITERIA IN THE MTTC.
5. CONTRACTOR SHALL SUBMIT THE PEDESTRIAN ACCESSIBILITY PLAN FOR REVIEW & ACCEPTANCE BY THE CONTRACT ADMINISTRATOR.
6. CONTRACTOR SHALL BE RESPONSIBLE FOR ALL PERMITS, THE SUPPLY, PLACEMENT & MAINTENANCE OF ALL TEMPORARY TRAFFIC CONTROL SIGNAGE IN ACCORDANCE WITH THE TENDER.
7. ALL LANE CLOSURE REQUESTS MUST BE SUBMITTED THROUGH THE CONTRACT ADMINISTRATOR & ARE SUBJECT TO THE APPROVAL OF THE TRAFFIC MANAGEMENT BRANCH.
8. CONTRACTOR TO PROVIDE FLAGPERSONS IN ACCORDANCE WITH THE MTTC WHEN MOVING MATERIALS OR EQUIPMENT INTO OR OUT OF TRAFFIC.
9. CONTRACTOR SHALL PROVIDE FLAGPERSONS DURING ALL ASPHALT PLACEMENT AT THE PROJECT LIMITS TO MINIMIZE IMPACT TO TRAFFIC.
10. WHEN FLAGPERSONS ARE PRESENT, FLAGPERSON SIGNAGE MUST BE PLACED IN ACCORDANCE WITH THE MTTC.

11. WHEN FLAGPERSONS ARE NOT PRESENT, THE FLAGPERSON SIGNAGE MUST BE REMOVED OR HIDDEN.
12. PROVIDE TEMPORARY RAMPS & CROSSING WHERE DIRECTED BY CONTRACT ADMINISTRATOR & IN ACCORDANCE WITH THE ACCESSIBILITY PLAN FOR PEDESTRIAN CROSSINGS WHILE PERFORMING WORK IN THE INTERSECTIONS AND APPROACHES.
13. INSTALL WARNING FLAGS IN ACCORDANCE WITH MTTC 3.07.04 ON THE FIRST WARNING SIGN IN EACH LANE DROP TAPER.
14. WHERE A LANE IS REQUIRED TO BE CLOSED ON MAJOR INTERSECTING STREETS PERFORM THE WORK ON THE TIE-IN DURING OFF PEAK-HOURS.
15. TEMPORARY TRANSIT LANDINGS WILL BE REQUIRED FOR ANY TEMPORARY TRANSIT STOP RELOCATIONS IN ACCORDANCE WITH THE MTTC.
16. CONTRACTOR TO MONITOR & MAINTAIN THE TEMPORARY SIGNAGE FOR THE DURATION OF THE PROJECT & MODIFY AS NEEDED FOR EACH STAGE OF THE WORKS.
17. CONTRACTOR TO REMEDY ANY SIGNAGE DEEMED INSUFFICIENT OR INCORRECT AS DIRECTED BY THE CONTRACT ADMINISTRATOR OR TRAFFIC MANAGEMENT.
18. STAGE SIDEWALK WORK SUCH THAT PEDESTRIAN ACCESS IS MAINTAINED ALONG ONE SIDE OF EACH ROADWAY AT ALL TIMES.
19. PROVIDE ADVANCED CONSTRUCTION & SIDEWALK CLOSED/DETOUR SIGNAGE IN ACCORDANCE WITH THE MTTC. PROVIDE SMALL CONES IN CENTRE WHERE BARRICADES. GUIDE PEDESTRIANS THROUGH THE CONSTRUCTION ZONE.

PHASE 01 LANE CLOSURE
PHASE 02 LANE CLOSURE
PEDESTRIANS

PROPERTY LIMITS DELINEATION

DELINEATION OF PROPERTY LIMITS AS SHOWN ON THIS DWG DOES NOT REPRESENT A "LEGAL SURVEY". KGS GROUP MAKES NO REPRESENTATION OR WARRANTY AS TO THE ACCURACY OF PROPERTY LIMITS DELINEATED ON THIS DWG, NOR ON THE DIMENSIONAL ACCURACY OF DWG FEATURES RELATIVE TO THOSE PROPERTY LIMITS.

METRIC

WHOLE NUMBERS INDICATE MILLIMETRES
DECIMALIZED NUMBERS INDICATE METRES

PRELIMINARY
NOT TO BE USED FOR CONSTRUCTION

A		ISSUED FOR REVIEW	2025/04/08	CR
NO.	REVISIONS	DATE	BY	



THE CITY OF WINNIPEG
PUBLIC WORKS DEPARTMENT
ENGINEERING DIVISION

KGS
GROUP

PROJECT TITLE
2025 LOCAL STREET RENEWAL PROGRAM

PHASING & SIGNAGE PLAN:
PRINCE EDWARD ST: ASPHALT RECONSTRUCTION

SHEET OF
09 10

COMPUTER FILE NAME
24-0107-014

FIGURE
F-0400

TENDER NO. 309-2025

